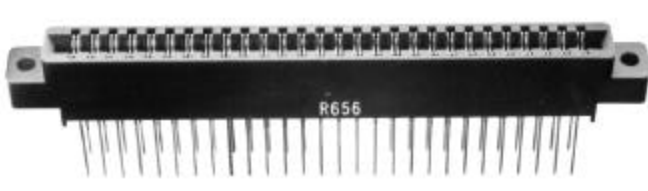
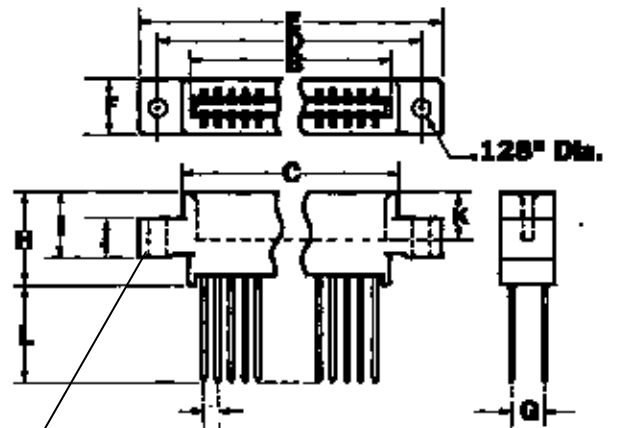


This section contains parts and accessories for Vectorbord products. They are useful for board-level prototyping and breadboarding. Prototypes are created in various ways; by computer design or by hand - but with one thing in common: sooner or later, you have to make a physical board. It is at this stage that Vectorbord and these parts and accessories may be useful to you. They are selected for convenience and utility and they are readily available from local Vector distributors.

Style 1



- Wire-Wrap .025" Sq. R656-3 56 Contacts
- Allows 3 level wraps
- Center Mount
- Use 28 to 32 AWG wire
- STD bus



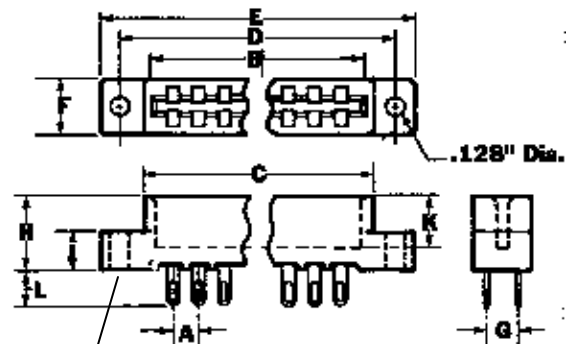
(Dimension table next page)

Centermount

Style 2



- Solder tail (with eyelet) R656-1 Solder
- Solder eyelet type
- Flush Mount



(Dimension table next page)

Flushmount

Accessories